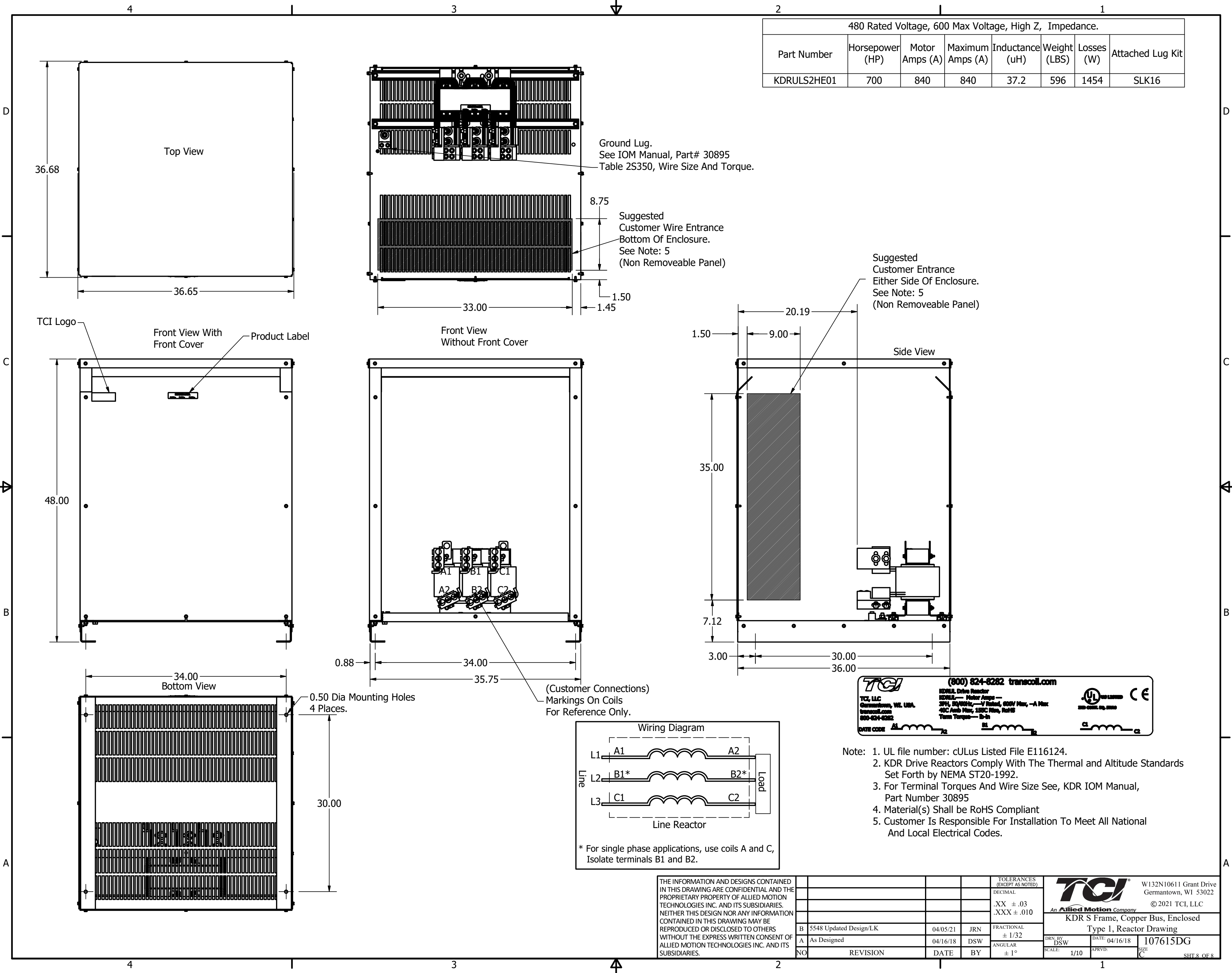


480 Rated Voltage, 600 Max Voltage, High Z, Impedance.							
Part Number	Horsepower (HP)	Motor Amps (A)	Maximum Amps (A)	Inductance (uH)	Weight (LBS)	Losses (W)	Attached Lug Kit
KDRULS2HE01	700	840	840	37.2	596	1454	SLK16



**TCI** (800) 824-8282 transcoil.com

TCI, LLC  
Gemantown, WI, USA.  
transcoil.com  
800-824-8282

KDRUL Drive Reactor  
KDRUL - Motor Amps -  
3PH, 50/60Hz, -V Rated, 600V Max, -A Max  
40C Amb Max, 125C Max, Ref IS  
Turn Torques - B-B

UL LISTED CE

DATE CODE

- Note:
1. UL file number: cULus Listed File E116124.
  2. KDR Drive Reactors Comply With The Thermal and Altitude Standards Set Forth by NEMA ST20-1992.
  3. For Terminal Torques And Wire Size See, KDR IOM Manual, Part Number 30895
  4. Material(s) Shall be RoHS Compliant
  5. Customer Is Responsible For Installation To Meet All National And Local Electrical Codes.

THE INFORMATION AND DESIGNS CONTAINED IN THIS DRAWING ARE CONFIDENTIAL AND THE PROPRIETARY PROPERTY OF ALLIED MOTION TECHNOLOGIES INC. AND ITS SUBSIDIARIES. NEITHER THIS DESIGN NOR ANY INFORMATION CONTAINED IN THIS DRAWING MAY BE REPRODUCED OR DISCLOSED TO OTHERS WITHOUT THE EXPRESS WRITTEN CONSENT OF ALLIED MOTION TECHNOLOGIES INC. AND ITS SUBSIDIARIES.

NO	REVISION	DATE	BY	TOLERANCES (EXCEPT AS NOTED)
B	5548 Updated Design/LK	04/05/21	JRN	FRACTIONAL ± 1/32
A	As Designed	04/16/18	DSW	ANGULAR ± 1°
NO				DECIMAL .XX ± .03 .XXX ± .010

**TCI** W132N10611 Grant Drive Gemantown, WI 53022 © 2021 TCI, LLC

An Allied Motion Company

KDR S Frame, Copper Bus, Enclosed

Type 1, Reactor Drawing

DRN BY: DSW DATE: 04/16/18 107615DG

SCALE: 1/10 APRVD: SIZE: C SHT 8 OF 8